



Calera QuikTrip Outparcels



Calera, AL 35040

Property Information

- Two outparcels available at new QuikTrip development scheduled to open Spring, 2020
- Adjacent to and visible from I-65 at Exit 231
- 57,106 VPD I 65 (2018 ALDOT)
- 16,239 VPD Hwy 31 (2018 ALDOT)
- Recent interstate overpass expansion from two lanes to five complete and open
- National retailers in market include Publix, Wal-Mart, Chick-fil-a, Cracker Barrel, Hampton Inn, Marvins and CVS Pharmacy



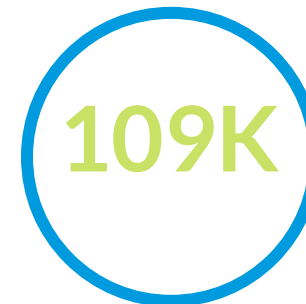
Contact Information

Jim Beilman
 QuikTrip Corporation
 817-786-3185
jbeilman@quiktrip.com

Melody Whitten
 58 Inc.
 256-558-4747
mwhitten@58inc.org



CALERA
 POPULATION



CALERA
 TRADE AREA POP



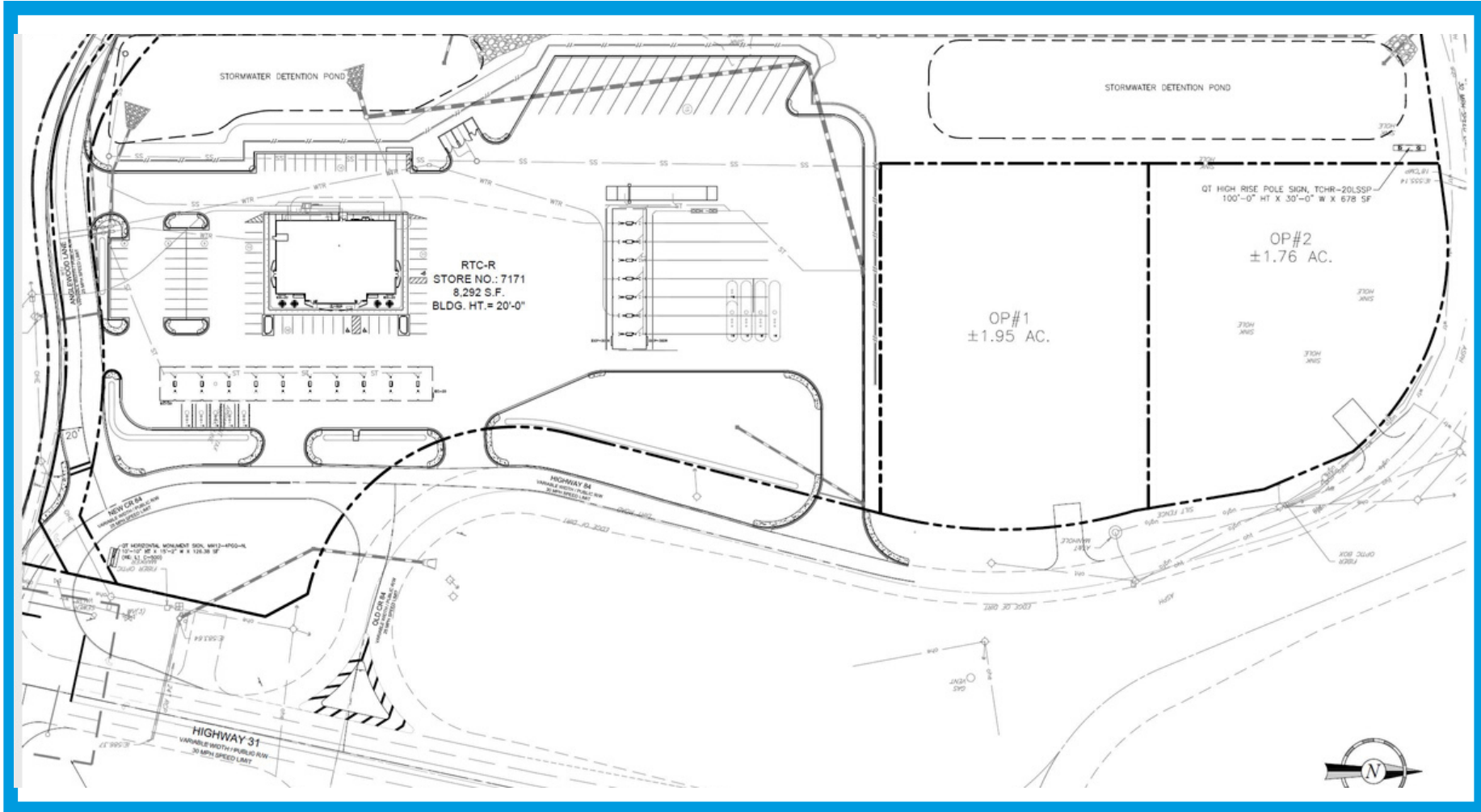
CALERA
 MEDIAN HH INCOME



Calera QuikTrip Outparcels



THE CENTER OF IT ALL.



Parcels Available

Outparcel #1	1.95 AC
Outparcel #2	1.76 AC

Signage

QT will erect 130' sign along I 65 with 250 sq. ft. reserved for each outparcel