



# SHELBY COUNTY DEVELOPMENT SITE I-65/HWY 52

PELHAM, ALABAMA



## SALE

I-65/Highway 52  
Pelham, AL 35071

## PROPERTY INFORMATION

- ± 11.08 acres
- Zoning: B-2, General Business, City of Pelham

## COMMENTS

- Graded site with all utilities including sewer
- Immediately adjacent to I-65 via Exit 242
- Excellent visibility and access

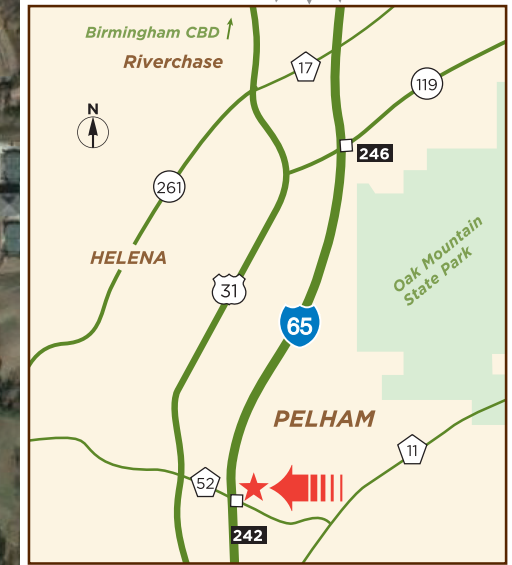
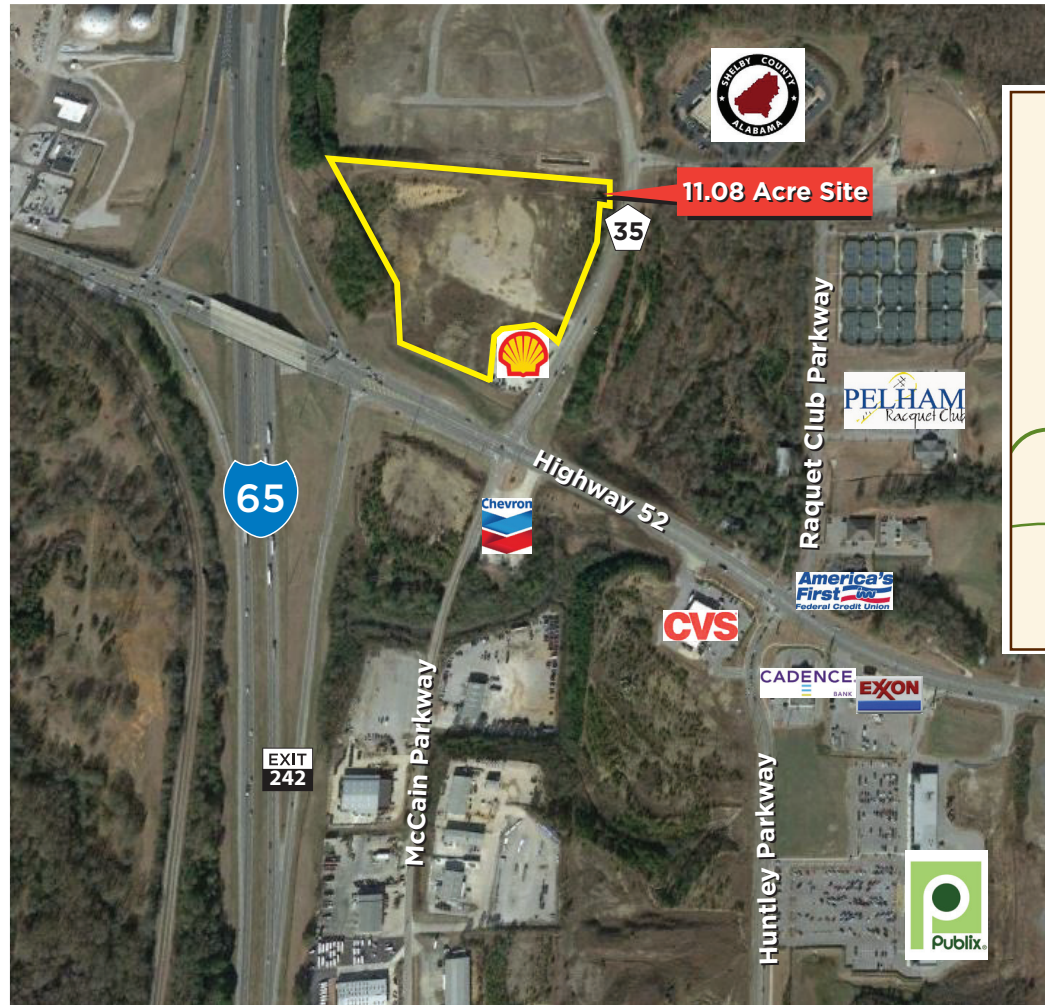
## SALE PRICE

~~\$3,650,000 (\$7.50 PSF)~~

**\$2,795,000 (\$5.79 PSF)**

## EXCLUSIVE AGENTS

Jack Brown, SIOR  
jackb@grahamcompany.com  
Sonny Culp, SIOR  
sonnyc@grahamcompany.com  
205.871.7100



1801 Fifth Avenue North  
Suite 300  
Birmingham, AL 35203

TEL 205.871.7100  
FAX 205.871.3331  
grahamcompany.com

Information deemed reliable, but not guaranteed.