

Alabaster

SHELBY COUNTY | ALABAMA

2024 RETAIL OVERVIEW



Shelby County
The Natural Choice

City of Alabaster

SHELBY COUNTY | ALABAMA

Alabaster is a suburb of the Birmingham-Hoover MSA and is situated along I-65, approximately 20 miles south of downtown Birmingham. As the largest City in Shelby County, Alabaster continues to attract residents and businesses due to its location, amenities and quality of life. Shelby Baptist Medical Center anchors the City's medical mile serving patients throughout central Alabama while high academic standards and an award-winning athletic program at Alabaster City Schools contribute to consistent population and housing growth. These factors combined with a diverse industry base make it easy to understand why Alabaster is an attractive place to live and do business!



34,513

City Population



30,380

City Daytime Population



\$82,590

City Median Household Income



40%

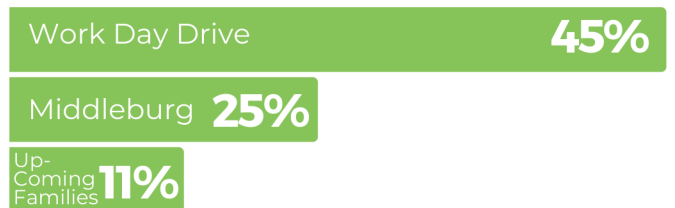
City Bachelor Degree or Higher

Source: 2023 ESRI

Median Disposable Income



ESRI Tapestry Segments



Major Employers

Shelby Baptist Medical Center
Brookwood Baptist Health.
1,100

ALABASTER CITY SCHOOLS
750

AGC
320

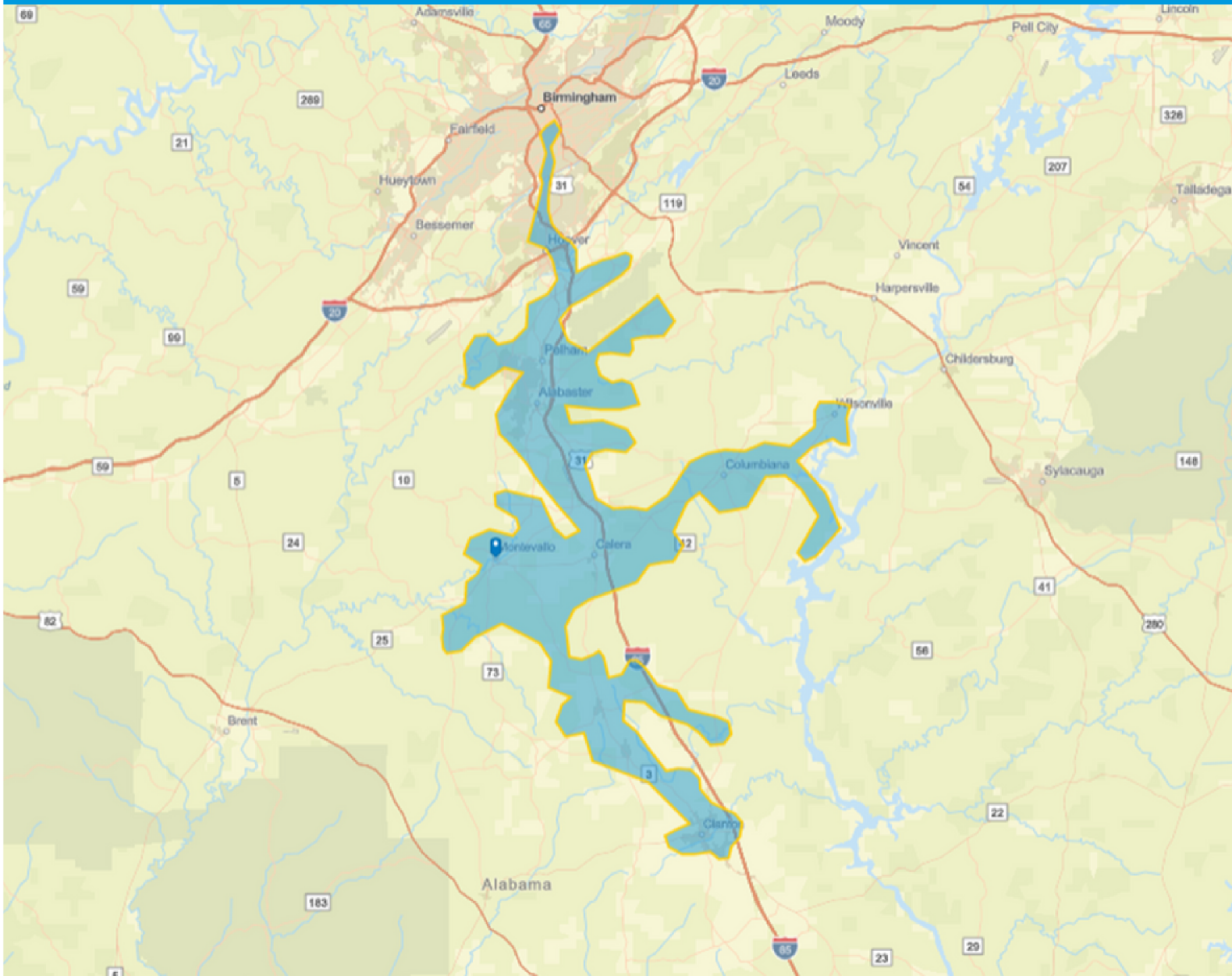
MacLean™
POWER SYSTEMS
260

Alabaster
CITY UNLIMITED
260

HIBBETT SPORTS
200

Alabaster Trade Area

SHELBY COUNTY | ALABAMA



169,579

Trade Area
Population



194,489

Trade Area Daytime
Population



\$68,968

Trade Area Median
Household Income



30%

Trade Area Bachelor
Degree or Higher

Source: 2023 | ESRI



2.5%+

YoY Median HH Income Growth
Past 5 Yrs



194,489

Trade Area Daytime
Population



1.99%

YoY Job Growth Past 5 Yrs



Alabaster Retail & Traffic

SHELBY COUNTY | ALABAMA